



VersaMatic[®] 415

Introducing the “VersaMatic[®] 415”, high output, continuous extrusion, shuttle clamp blow molding machine

High output with fast cycle time

Fully integrated closed loop proportional hydraulics for all clamp, blow pin, and parison programming functions. Up to four heads on 115mm centers. High output 2 ½” AC Vector drive extruder.

Minimal floor space requirement

On average 30% smaller than other machines in its class.

Excellent flexibility

Tie bar-less clamping system. Fast mold changes. Fully oriented discharge and in-machine trimming.

Adjustable blow station

Produces conventional or angle neck finishes.

Remote head tooling adjustment

Less hassle translates to less down time.

Easy to learn and operate

Industry standard Barber Coleman MACO RS distributive Logic Control System. Friendly adjustment and control of all machine functions from Windows based WonderWare[™] HMI package touch screen operator panel. Excellent communication interface for downstream equipment and production monitoring.



- See other side for specifications and dimensions -

Convenient maintenance for minimal down time Remote diagnostics. Full machine process documentation with Historical Trending. Easy access with large opening capability of the machine safety doors.

Production and quality enhancing options

- Leak Testing
- Vision Inspection
- Remote Pressure Compensation for Clamp Tonnage and Blow Pin Pressures
- SPC output production monitoring capability.

VersaMatic® 415

Specifications

Dimensions

Length	123"	3124 mm
Width	99"	2515 mm
Height	168"	4267 mm
Weight	14,700 lbs	6668 kg

Clamp

Daylight (open/closed)	20.5"/11"	520mm/279mm
Stroke	9.5"	241mm
Force	12 tons	10.9 metric tons
Usable Platen Area	14.5" x 19"	368mm x 483mm
Dry Cycle	3.0 seconds	

Extruder

Rated Output	180 lbs/hr	81.6 kg/hr
Screw Diameter	2.5"	63.5mm
Screw L/D Ratio	22:1	
Screw Speed Range	20-120 rpm	

Extrusion Heads

Single	
Dual	200 mm Centers
Triple	130 mm Centers
Quad	115 mm Centers

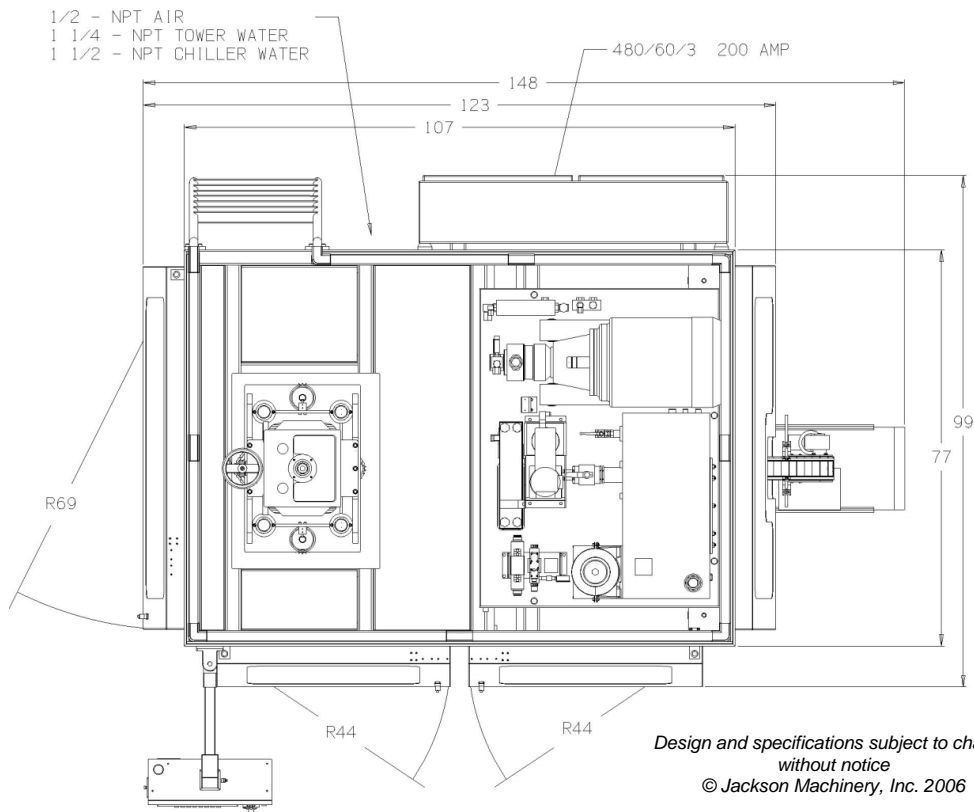
Note: Other head centers available – contact JMI

Hydraulics

Type	Piston + Gear / Gear	
Horsepower	40 / 2.25 hp	29.8 / 1.68 kw
Pump Capacity	20 + 4 / 14 gpm	75.7 + 15.1 / 53.0 lpm
Reservoir	60 gallons	227 liters

Utilities

Air Requirements	10 cfm @ 80 psi	283 lpm @ 5.52 bar
Hydraulic Cooling	5 tons 15,120 Kcal/hr	
Mold Cooling	6 tons 18,144 Kcal/hr	
Machine Voltage	480 / 3 / 60	
Control Voltage	24 VDC	
Disconnect	200 amp	



Jackson Machinery Inc.
 3830 Hwy H
 Port Washington, WI 53074
 Telephone (262) 284-1066
 Fax (262) 284-5466
 www.jackson-machinery.com